

20mL

METAL DRENCHER/INJECTOR



njphillips™
DATAMARS



PASD1232







PAD1232



PAD1232C

- Highly chemical resistant cylinder with moulded graduations.
- High-flow, blockage resistant valves.
- Easy to use dose adjustment system.
- Dual barb allows 3/8" (9mm) or 1/4" (6mm) bore feed tubes.
- Handles most products.

Product	Dose Range	Increments	Material	Packaged Dimensions (WxHxD)	Packaging Type	Code	SAP Code	EAN Barcode	UPC Barcode
20mL Metal Drencher	1mL - 20mL	1mL	Metal	288 x 190 x 53mm	Box	PAD1232	850 0000-419		
20mL Metal Drencher/Injector (PAD1232 + Injector Attachment)	1mL - 20mL	1mL	Metal	288 x 190 x 53mm	Box	PASD1232	850 0000-011		
20mL Metal Drencher/Backpack (PAD1232 + 2.5L Backpack)	1mL - 20mL	1mL	Metal	420 x 237 x 76mm	Box	PAD1232C	850 0000-437		

For more information, email: ahdsinfo@datamars.com or phone toll free (Australia): 1800 247 175

www.njphillips.com

ACCESSORIES

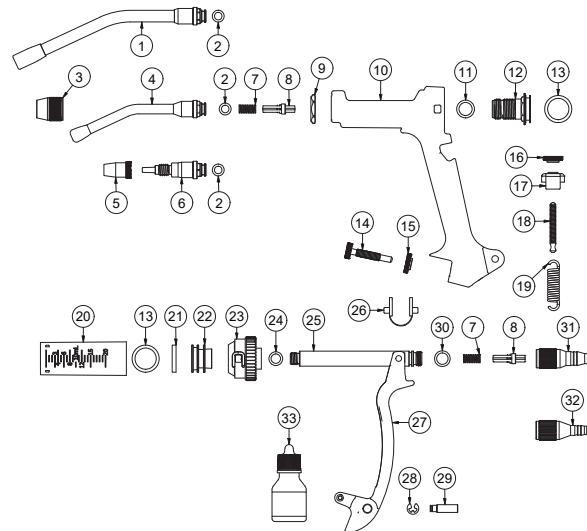
Product	Code	SAP Code
2.5L Rigid Backpack	WX46	850 0000-445
Metal Hook Nozzle	FHCAXXN505-50	850 0000-177
Metal Sheep Nozzle	WX480	850 0001-318
Metal Lamb Nozzle	WX1506	850 0001-217



20mL Metal Drencher/Injector Parts Breakdown

SPARE PARTS KITS AVAILABLE

Product	Code	SAP Code	Part No.
Major Service Kit	WX1618	850 0000-433	2, 7 (x2), 8 (x2), 11, 13 (x2), 19, 21, 22, 23, 24, 26, 28, 30, 33
Minor Service Kit	WX1617	850 0000-344	2, 7 (x2), 8 (x2), 11, 13 (x2), 19, 21, 22, 24, 26, 28, 30, 33



- | | |
|----------------------------|-------------------------------|
| 1. Cattle Nozzle | 18. Adjuster Spindle |
| 2. Seal Ring (010-N70) | 19. Return Spring |
| 3. Nozzle Nut | 20. 20mL Barrel |
| 4. Nozzle | 21. Lubricating Washer |
| 5. Needle Nut | 22. 20mL Piston |
| 6. Injection Attachment | 23. Pushrod Guide |
| 7. Valve Spring | 24. O-Ring (011-N70) |
| 8. Valve | 25. 20mL Pushrod |
| 9. Lock Nut | 26. Lever Pads |
| 10. Handle | 27. Lever |
| 11. Seal Ring (013-N70) | 28. Circlip |
| 12. Delivery Cage | 29. Pin Lever |
| 13. Seal Ring (115-S70) | 30. O-Ring (012-N70) |
| 14. Adjuster Screw | 31. Inlet Adapter (Dual Barb) |
| 15. Dose Adjuster Lock Nut | 32. Inlet Fitting |
| 16. Adjuster Nut | 33. 15mL Oil Bottles |
| 17. Trunnion (Adjuster) | |