

4mL DIESEL INJECTOR



This instrument has been specifically designed for administration of Diesel. Other chemical formulations may not be compatible with some components. *The manufacturer will accept no responsibility for the consequences should this unit be used to administer any product other than Diesel.*

INSTRUCTIONS FOR USE

1 Connect the feed tube to the inlet fitting and to the container. Wind the feed tube springs in an anti-clock-wise direction over the feed tube at these points. This will hold the feed tube in position and prevent it kinking.

2 ADJUSTING THE DOSE: There are three dose settings on the gun, 1mL, 2mL and 4mL. Select the appropriate dose by rotating the dose selection ring in either direction until the required dose (in mls) is showing at the top of the gun.

3 PRIMING THE GUN: To prime the gun, select the 4ml dose, point the nozzle vertically upwards, and begin priming by squeezing the trigger until liquid appears in the chamber. Carefully squeeze the trigger once more to expel air from the chamber.



Care must be taken to ensure the liquid does not come into contact with any part of the operators body. Chemicals may cause injury to the operator.

CARE AND MAINTENANCE

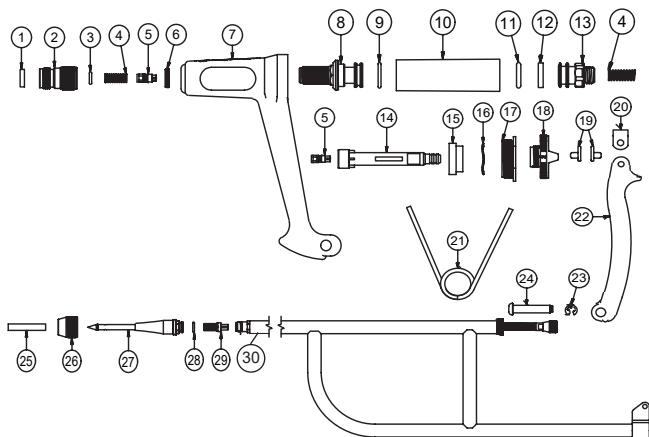
To ensure continued high performance from this instrument, attention to cleanliness is essential. After each use, flush the instrument and feed tube thoroughly by pumping through a warm detergent mix, followed by clean water. Remove the feed tube from the instrument and suck a small quantity of NJ Phillips Lubricant, into the cylinder by immersing the inlet fitting in the Lubricant, and gently pumping the lever. If at any time the instrument should become sluggish in operation, cleaning and lubrication should overcome this.



The gun can only be primed at the 4ml dose setting.



DO NOT store your applicator or feed tube full of product. Clean as per the "Care and Maintenance" instructions.



- | | | |
|------------------|-----------------------------|--------------------------|
| 1. Rubber Washer | 11. Seal Ring | 21. Lever Spring |
| 2. Adaptor | 12. Lubricating Washer | 22. Lever |
| 3. Seal Ring | 13. Piston | 23. Circlip |
| 4. Spring | 14. Pushrod | 24. Handle Pin |
| 5. Valve | 15. Dose Adjustor Lock Ring | 25. Needle Protector |
| 6. Lock Nut | 16. Wave Washer | 26. Nozzle Nut |
| 7. Handle | 17. Body Plug | 27. Spear Nozzle |
| 8. Delivery Cage | 18. Dose Adjustor | 28. Seal Ring |
| 9. O-Ring | 19. Lever Pad x 2 | 29. Valve & Spring |
| 10. Cylinder | 20. Retaining Clip | 30. Spear Brace Assembly |

Assembled at an ISO 9001:2015 accredited facility

Contact your local NJ Phillips product representative for service kit details

Email: ahdsinfo@datamars.com

Website: njphillips.com

Toll free number: 1800 247 175

njphillips[™]
DATAMARS

850 0000-703 | 355 0000-792