

X-STREAM POUR-ON APPLICATOR

30mL FIXED DOSE, 2.5mL INCREMENTS

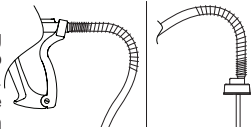


This instrument is designed for external application only. Before use, ensure all operators have read the chemical manufacturer's instructions for use and application information. As components in the instrument may be affected by solvents in other formulations, no responsibility will be accepted by the manufacturer should the instrument be used for any purpose other than that intended.

INSTRUCTIONS FOR USE

1 CONNECTIONS

Attach the enclosed connecting tube to the 30mL applicator and to the draw off system of the container. Make sure the springs provided are screwed over the tubing in both locations in a counter-clockwise direction. This will prevent the tubing from kinking at these connection points.



2 PRIMING THE APPLICATOR

Once the applicator is connected to the container, it **MUST** be primed on maximum dose to ensure all air is expelled from the cylinder. Set the dose adjuster ring to 30mL and depress the lever until the formulation completely fills the applicator cylinder. **The applicator must be held vertically, with the nozzle pointed upwards, to ensure the applicator is fully primed.**



Once the applicator is primed, then change the dose as required. **DO NOT** squeeze the lever to change the dose. For more information see MSDS.



Care must be taken to ensure the liquid does not come into contact with any part of the operators body. Chemicals may cause injury to the operator.

3 SETTING THE REQUIRED DOSE: To set the applicator to deliver the required dose, allow the applicator lever to return to its maximum stroke and turn the dose adjuster ring until the required dose appears in the viewing window. The required dose will be delivered when the dose adjuster ring is felt to snap into a locking position. Always ensure that the lever is allowed to return to its maximum stroke before rotating the dose adjuster ring, otherwise damage may result to the applicator.

4 APPLICATION

Refer to the chemical manufacturer's label and instructions for the correct application position and dose recommendations. The illustration shown, indicates the preferred position of a 5 Litre upright draw-off system and 20 Litre container.



1 As the dose is measured from the rear of the cylinder, some of the formulation will be visible on completion of delivery stroke for doses set at less than the maximum 30mL dose.

2 The cylinder of this instrument is removed by unscrewing. Should the cylinder be removed, care **must** be taken when replacing the cylinder to ensure the o-ring is not damaged, which will cause the applicator to malfunction.

CARE AND MAINTENANCE

Attention to cleanliness is essential to ensure continued high performance from this instrument. After each use, or after storage for long periods between use, maintain the applicator by flushing thoroughly with a soap and water mix, then water only. If at any time the instrument should become sluggish in operation, maintenance by cleaning and lubrication with NJ Phillips Lubricant will probably overcome the problem.



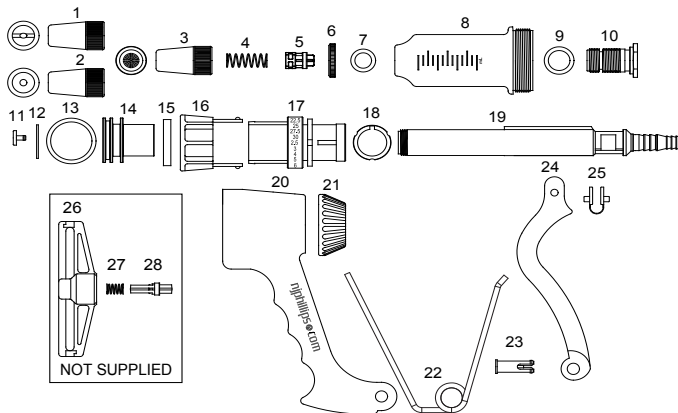
DO NOT store your applicator or feed tube full of product. Clean as per the "Care and Maintenance" instructions.

LEGEND:

1. Fan Nozzle
2. Stream Nozzle
3. Swirl Nozzle
4. Delivery Valve Spring
5. Delivery Valve
6. Delivery Cage Lock Nut
7. Nozzle Seal Ring
8. Cylinder
9. Delivery Cage Seal Ring
10. Delivery Cage
11. Piston Retainer Valve
12. Inlet Valve
13. Piston O-Ring
14. Piston
15. Lubricating Washer
16. Dose Adjuster
17. Dose Adjuster Sleeve
18. Dose Adjuster Guide Ring
19. Pushrod
20. Handle
21. Dose Collar
22. Return Spring
23. Lever Pin
24. Lever

25. Lever Pad

26. Spray Head Assembly
27. Delivery Valve Spring
28. Delivery Valve



IMPORTANT QUICK REFERENCE TROUBLESHOOTING GUIDE

SYMPTOM	PROBABLE CAUSE	CORRECTIVE ACTION
1a. Product being returned to the container from the applicator.	Foreign matter lodged under the inlet valve.	Remove cylinder (8) and inspect inlet valve (12) to ensure it is clean. Lubricate with NJ Phillips Lubricant and reassemble cylinder.
1b. Unable to draw product from the container.	Foreign matter lodged under delivery valve.	Remove the nozzle (1, 2 or 3). Clean the delivery valve (5) and spring (4) and ensure it is positioned in the correct direction.
	Kink in feed tube or blockage within the tube or draw-off system.	Ensure feed tube spring is located correctly on applicator and draw-off.
2. Product leaking out of the nozzle or air being drawn into the cylinder from the nozzle end.	Nozzle seal ring is damaged.	SEE B. Replace nozzle seal ring (7).
	Delivery valve and spring are incorrectly assembled.	SEE B. Reassemble valve (5) and spring (4) correctly (see parts illustration).
	Delivery valve sealing edge damaged.	Replace the delivery valve (5) and spring (4).
3. Fluid dripping/running out of nozzle when not in use.	Delivery cage seal ring damaged.	Replace the delivery cage seal ring (9).
	Applicator is hanging at end of feed tube when not in use.	Hang applicator at same height or higher than off take point of feed tube on container of product. This ensures the delivery valve is free of load which can cause the product to leak past the valve assembly.
4. Hard delivery stroke pressure	Foreign matter in delivery valve spring or blockage in nozzle.	SEE B. Remove the nozzle (1, 2 or 3). Clean the delivery valve (5) and spring (4) and ensure it is positioned in the correct direction.
	Foreign matter lodged on or around piston o-ring.	SEE A. Replace piston o-ring (13) and lubricate liberally. DO NOT use petroleum based lubricants only use synthetic or vegetable oil.
	Piston inlet valve not seated correctly.	Remove cylinder (8). Hold handle (20), tighten piston (14) by firmly holding with a dry cloth and turn clockwise.
	Feed tube not connected to applicator or draw-off correctly.	SEE C. Ensure feed tube spring is located correctly on applicator and draw-off.
	Feed tube perforated / damaged.	Replace the feed tube.
5. Air is being drawn into the cylinder from in and around the piston.	Feed tube connection at container or applicator is split or damaged.	Replace container fitting to ensure an air tight seal. Cut feed tube for clean ends.
	Piston o-ring and lubricating washer are dry.	SEE A. Remove cylinder (8), soak piston o-ring (13) and lubricating washer (15) in NJ Phillips Lubricant, or synthetic or vegetable oil.
	Blockage in inlet line.	Check inlet valve (12), feed tube and container draw off fitting for foreign matter.
	Kinking or restriction of feed tube.	Remove restriction or reposition feed tube. Ensure springs are in correct position.
	Chemical container not collapsing as applicator draws fluid.	Vent pack or use a Phillips Vented Draw-Off system.

Assembled at an ISO 9001:2015 accredited facility
 Contact your local NJ Phillips product representative for service kit details
 Email: ahdsinfo@datamars.com
 Website: njphillips.com
 Toll free number: 1800 247 175

njphillips.
DATAMARS

850 0000-627 | 355 0000-888